



WANHUA CHEMICAL
(BEIJING) CO., LTD.

en.whchem.com

Polyurethane Adhesive Products



Innovation Creates Excellence

CONTENTS

COMPANY PROFILE	02
PRODUCT INTRODUCTION	03
Laminating Adhesive	03
/ Solventless PU Laminating Adhesives	
/ Solvent PU Laminating Adhesives	
Wood Adhesive	05
Adhesive for Automotive	05
Recycling Foam Binder	06



WE ARE COMMITTED TO CREATING A WORLD - CLASS CHEMICAL MATERIAL COMPANY !

COMPANY PROFILE



Wanhua Chemical (Beijing) Co., Ltd. is a wholly-owned subsidiary of Wanhua Chemical Group Co., Ltd. Wanhua Beijing is a high-tech company specialized in PU application technology; we have the largest PU R&D facility in China and a China national accredited laboratory.

Based on our advanced technology platforms, outstanding customer understanding and global operation capability, we provide value added product and service in vast variety industries including automotive, furniture, rail transit, coating and adhesives. Our products are exported to major countries around the world.

**We hope to supply the better applied technology
and higher quality service for you !**



LAMINATING ADHESIVES

/ SOLVENTLESS PU LAMINATING ADHESIVES

Application	Product Mark	Viscosity@25°C(mPa·s)	Product Features
Boiling	WANNATE® 6092A / WANEXEL® 792B	1150±200/550±150	Fast curing 100°C/30min boiling (Plastic/ Plastic)
Retorting	WANNATE® 6099A / WANEXEL® 793B	1800±500/3500±500	Good bonding property 121°C/40min retorting (Plastic/ Plastic)

Application	Product Mark	Viscosity@25°C(mPa·s)	Product Features
Paper-lamination	WANNATE® 6081H	1400±500	Good operability
	WANNATE® 6091L	1600±500	Excellent bonding property



/ SOLVENT PU LAMINATING ADHESIV

Products	Appearance	Viscosity@25°C(mPa·s)	Solid Content(%)	A/B Mix Ration(Mass)	Product Features
WANEXEL® 775/ WANNATE® 6075	Yellow liquid	2000-4000	75±2	20/4	Excellent versatility 100°C/30min boiling (Plastic/ Plastic)
WANEXEL® 772/ WANNATE® 6075	Yellow liquid	2500-4500	72±2	20/3	Good adhesion properties 121°C/40min retorting (Plastic/ Plastic)
WANEXEL® 770/ WANNATE® 6075	Yellow liquid	2500-4500	70±2	20/4	Good adhesion properties 100°C/30min boiling (Aluminum foil/ Plastic)
WANEXEL® 765/ WANNATE® 6075	Yellow liquid	2000-4000	65±2	20/3	High heat resistance High initial strength 121°C/40min retorting (Aluminum foil / Plastic)

WOOD ADHESIVE

Wood adhesive products have many advantages such as formaldehyde free, less adhesive spread, high strength and non-toxicity after curing. Products with various curing rates meet different operating conditions and environments. Products are mainly used in the field of wood adhesive, such as timber finger-joint, board splicing and veneer slicing.



Products	Appearance	Viscosity@25°C(mPa·s)	NCO(%/Wt)	Application and Characteristics
WANNATE® 6301	Brown liquid	160~460	11.7~12.7	Higher strength and reaction rate
WANNATE® 6302S	Brown liquid	150~400	10.9~12.9	Higher strength and reaction rate

ADHESIVE FOR AUTOMOTIVE

/ AUTOMOTIVE ROOF ADHESIVE

Adhesive is suitable for automotive roof in wet-process. It is used in laminating glass-fiber, non-woven and PU foam together in the mould and products have high peeling strength.



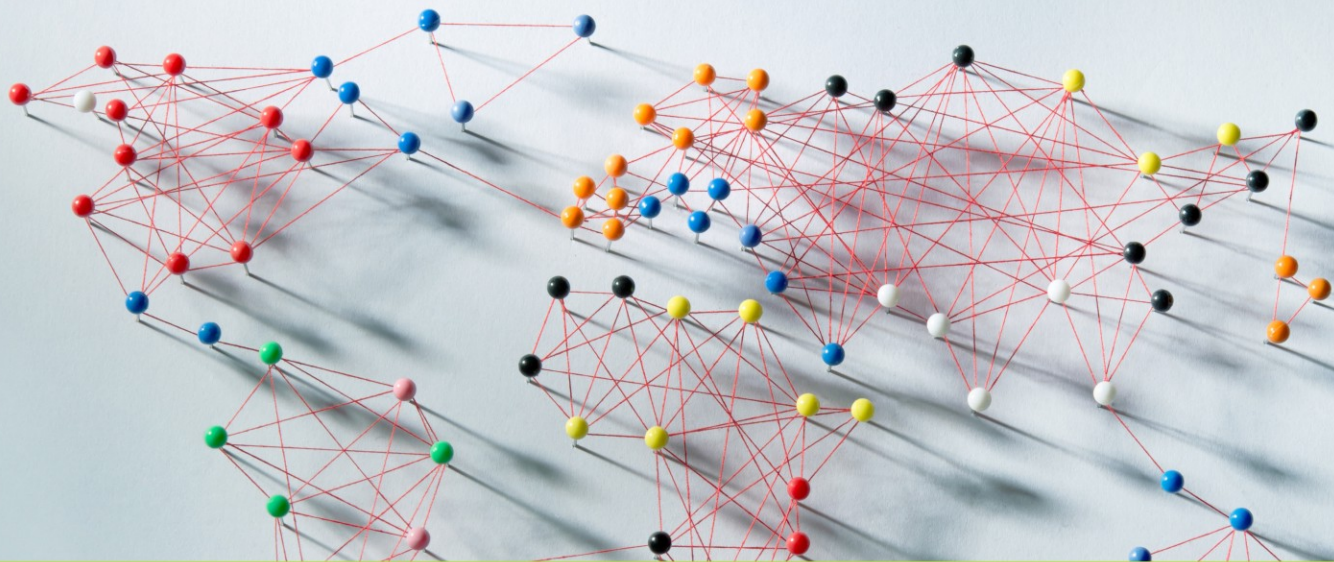
Products	NCO(%/Wt)	Viscosity@25°C(mPa·s)	Solid content(%)	Application	Characteristics
WANNATE® 8028	10~12.5	40~90	60~70	Used by Spraying in wet-process	High peeling strength
WANNATE® 8029	21.5~23.5	1600~3000	100	Used on Roller in wet-process	Long opening-time / High peeling strength
WANNATE® 6065	1~2	50~300	33~37	Used for decorative layer laminating in wet-process	Good initial tack / Quick drying

RECYCLING FOAM BINDER



Products	Appearance	Viscosity@25°C(mPa·s)	NCO(%/Wt)	Application and Characteristics
WANNATE® 8021	Brown liquid	300~400	24.8~25.6	Excellent physical properties, low viscosity
WANNATE® 8023	Brown liquid	1200~1600	17.8~18.8	Excellent physical properties, better bonding strength
WANNATE® 8032	Brown liquid	250~450	28.7~29.7	Good physical properties, medium hardness
WANNATE® PM-9054	Brown liquid	350~500	30.7~32.0	Good physical properties, suitable for high hardness foam





CONTACT US

WANHUA CHEMICAL (BEIJING) CO., LTD.

ADD : 5 Xinghuo Street, Changping Science Park, Beijing, P.R.China

P.C. : 102200

TEL : 400-960-0309 transfer to 3

FAX : +86 10 69718157

WEB : en.whchem.com

Disclaimer

The figures in this document are typical values for reference only. The guaranteed values in the sales contract shall prevail. Users are responsible for testing products purchased from the Company to verify the suitability for the proposed process, application, and standards. As applications and processing of our products are affected by various factors, which are all beyond the control of the Company, thus users shall bear full responsibility. It is our duty to help customers solve technical issues that arise in the use of our products, but the Company shall not be liable for any indirect damages resulting from the technical support.

The Company shall not be liable for the following under any circumstances:

- (1) Indirect, secondary, or incidental losses, or loss of potential profits;
- (2) Losses of a third party other than the customer resulting from our products being resold, leased, or given;
- (3) Losses in other raw materials purchased aside from our products, losses in labor or utility, or losses due to maintenance costs or the suspension of production.



WeChat